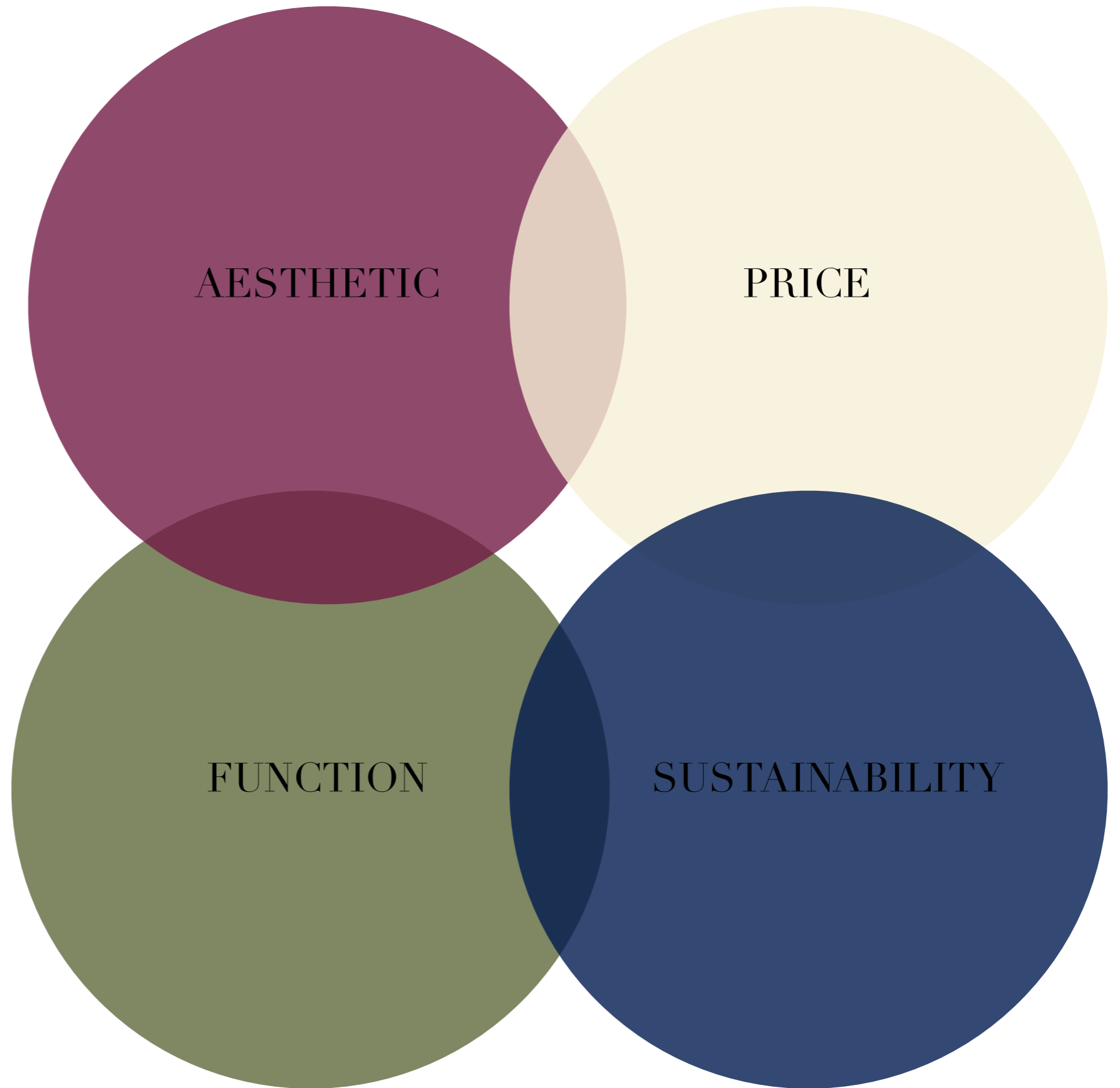




SAMPLE PROJECT

CREATING A PLAN

These are the four main criteria at play when creating a plan. Katie strives to create designs that not only hit their aesthetic marks, but also function at a high level, using sustainable products and processes where possible and sit at a price point achievable for the client.





SAMPLE PROJECT

Please note that this is just a snapshot of a larger project and is intended as an illustration only.

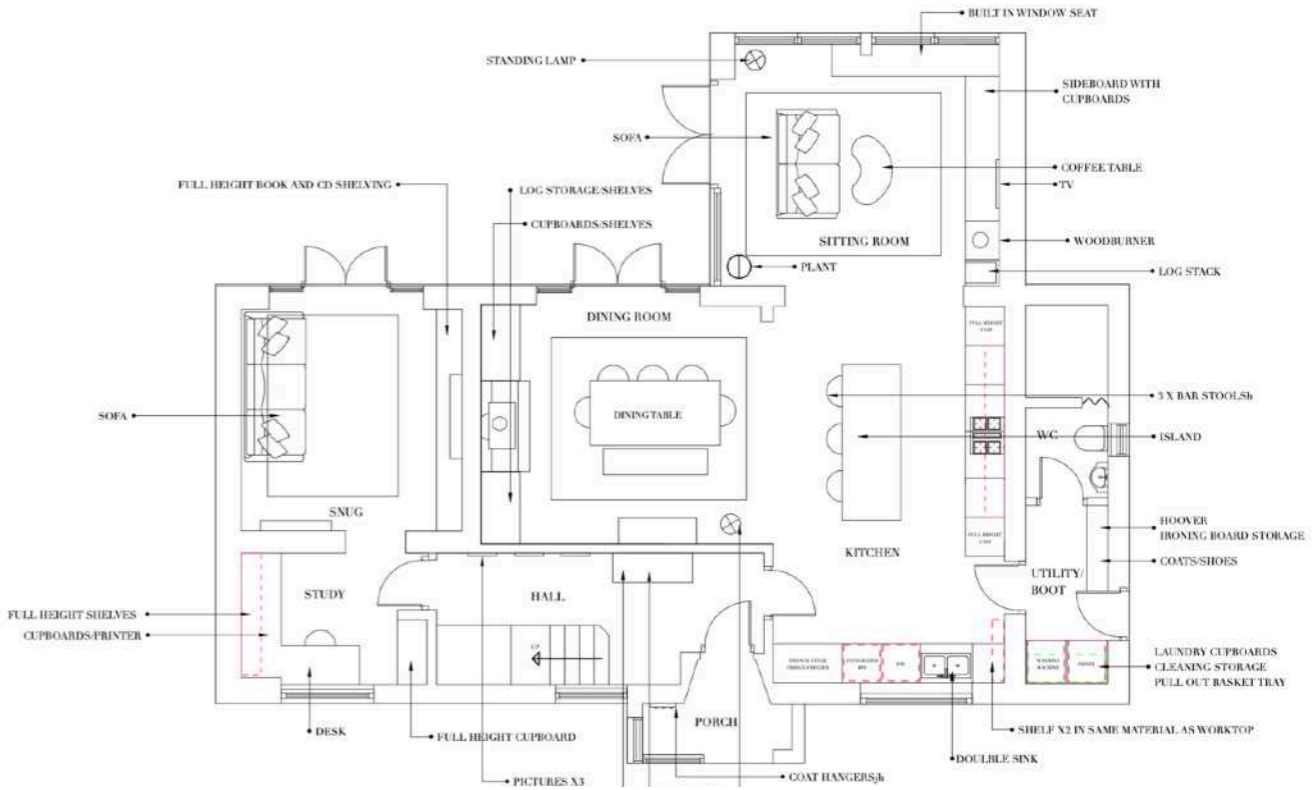
STAGE ONE: *Conceptual design*

Stage 1 is arguably the most important phase and is certainly the most creative!

example
CONCEPT BOARD



example
FLOOR/SPACIAL PLANNING



STAGE ONE: *Conceptual design*

example
INITIAL JOINERY
IDEAS



Indicative sketch for dining joinery

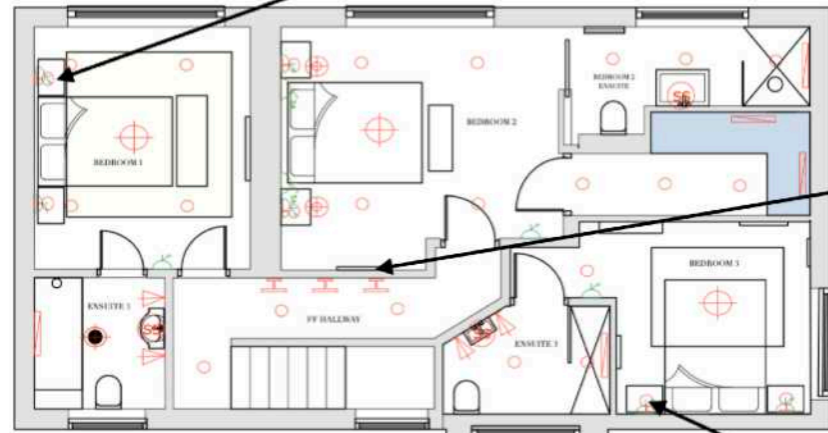


example
SKETCHES



STAGE ONE: *Conceptual design*

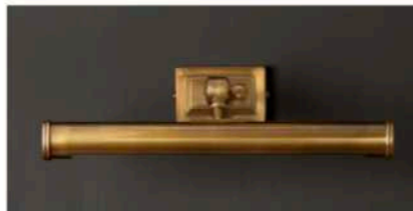
example
Lighting scheme
(simplified)



1. Bedroom wall lights
Holden by Porta Romana



2. Hallway picture lights
Nita by Pooky



3. Bedroom 3 ambient lamps
Satre by Pooky



example
Soft furnishing
concept planning



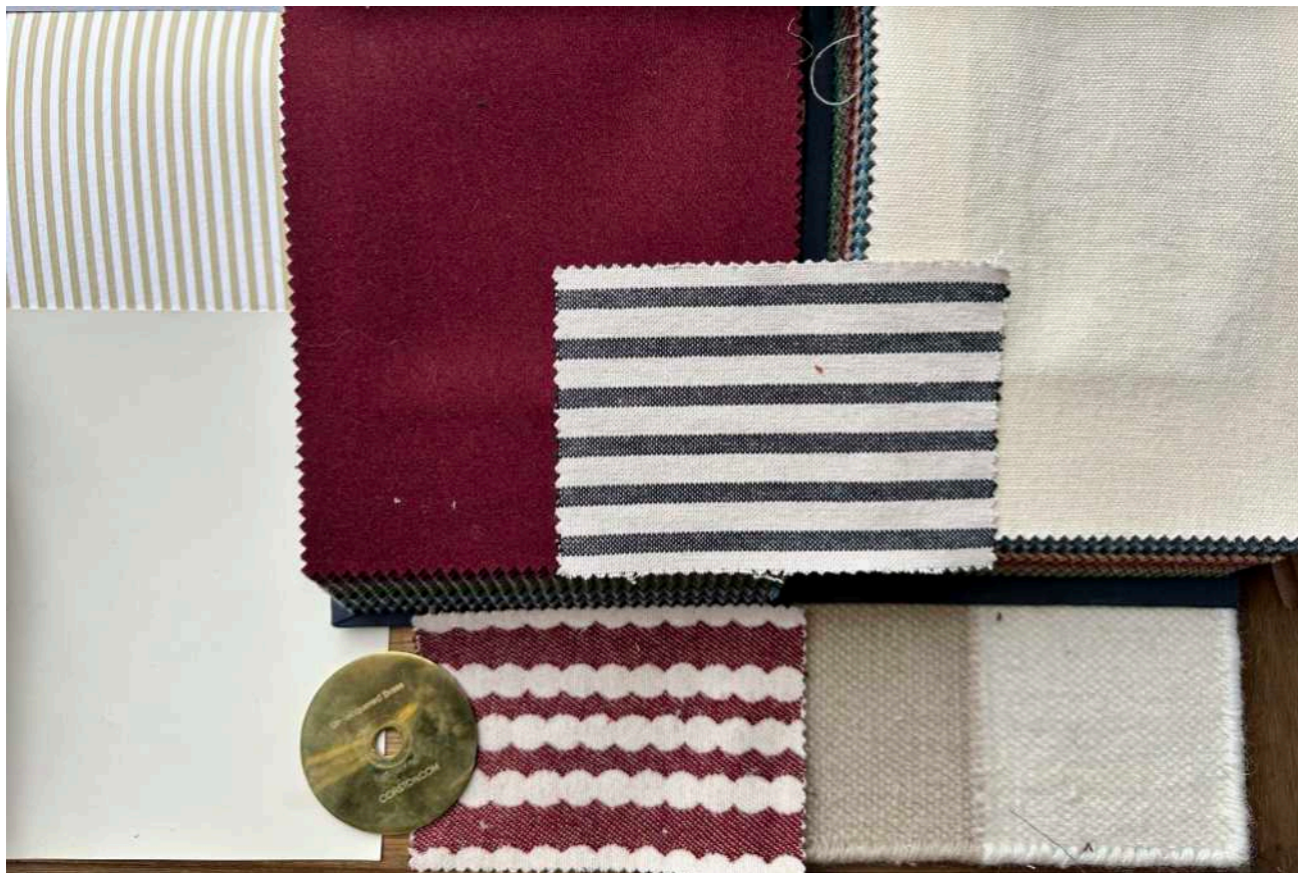
Fabric: Andrew Martin

Bullion fringe



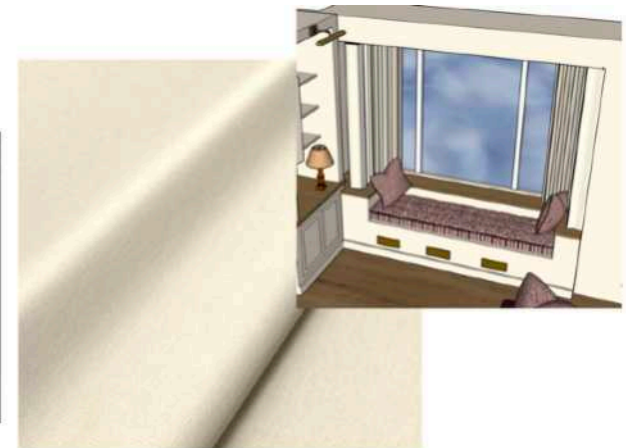
STAGE ONE: *Conceptual design*

example
Sample board

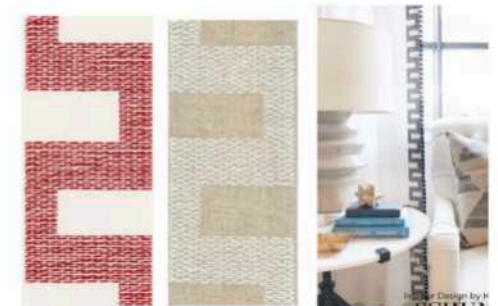


example
Window dressings
plan

SITTING ROOM CURTAINS

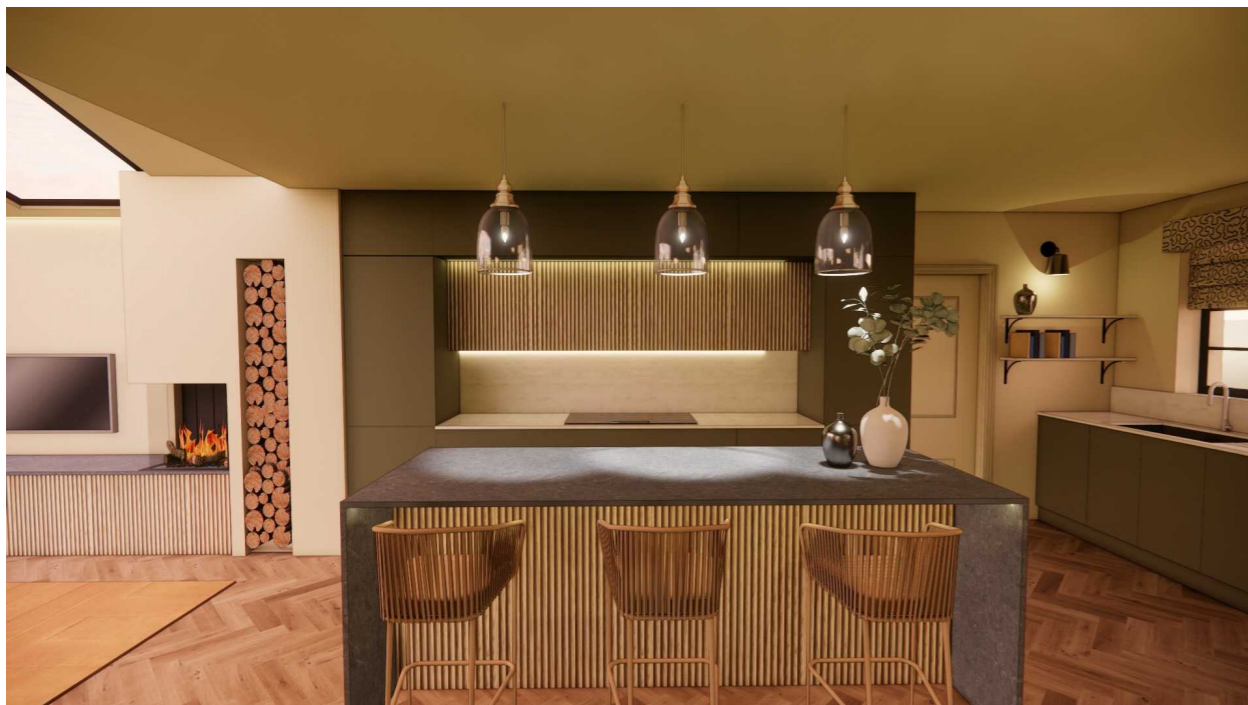


- Curtains to sit along the windowsill
- Ceiling mounted curved pole
- Note that it will have right angles so its not going to be as easy to draw them as conventional curtains .They will also be drawn behind the window seat
- Option: add a thin roman blind behind for privacy and keep curtains as aesthetic
- Add trim down the leading edges - these two options would work beautifully



STAGE ONE: *Conceptual design*

example
3D RENDERS



STAGE TWO: *Design development*

Developing the approved designs into detailed plans and specifications

*example
Paint schedule*

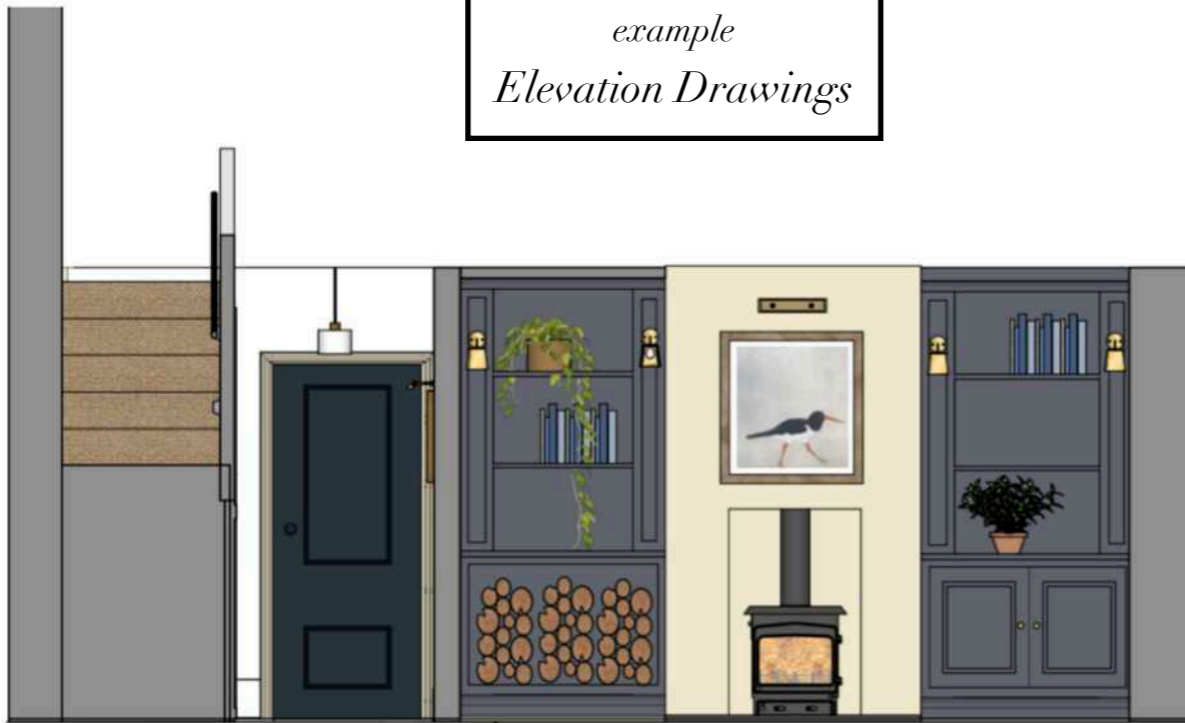
AREA	COLOUR	PAINT NAME /CODE	FINISH
Walls (up to 40cm below cornice)		'KITTIWAKE' Farrow & Ball	DEAD FLAT
Internal Doors		'Paris Grey' Edward Bulmer	WATER BASED EGGSHELL
Internal window and door frames		'Paris Grey' Edward Bulmer	WATER BASED EGGSHELL
Skirting boards		'INCARNADINE' Farrow & Ball	Modern eggshell (40% sheen)
Ceiling and top 40cm top of walls		'Paris Grey' Edward Bulmer	Emulsion
Architrave		WIMBORNE WHITE' Farrow & Ball	Modern eggshell (40% sheen)
Joinery (wardrobes and new cupboards)		'INCARNADINE' Farrow & Ball	Modern eggshell (40% sheen)

*example
Design board*

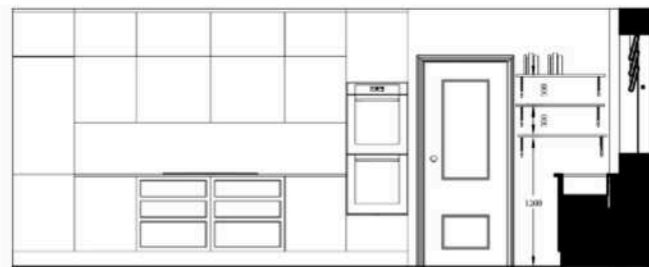


STAGE TWO: *Design development*

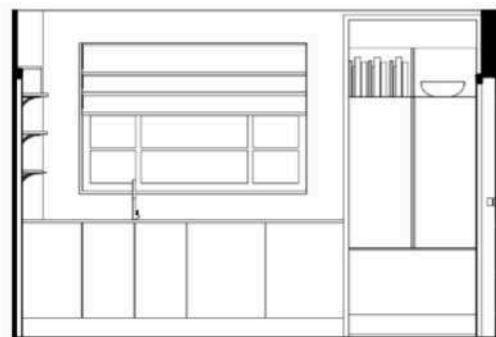
example
Elevation Drawings



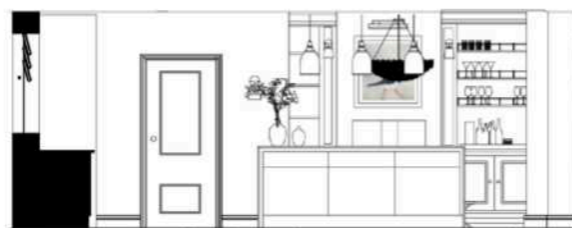
KITCHEN



ELEVATION B



ELEVATION C



ELEVATION D

example
Joinery Plan

JOINERY 1
MEDIA WALL



LOWER CABINET DOORS OFF



STAGE TWO: *Design development*

Example FLOOR FINISHES PLAN

Kingswood Versailles Taupe
Lapicida

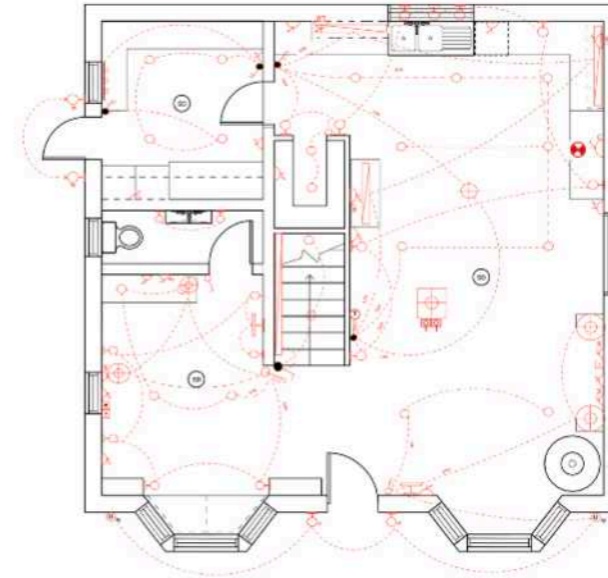


PRODUCT SPECIFICATION NOMAD PORCELAIN RANGE

Technical Features	Reference	Required Standards	Average Value
Dimensions of sides		± 0.05%	Conforms
Thickness		± 0.05%	Conforms
Straightness	ISO 10545-1	± 0.4%	Conforms
Squareness		± 0.2%	Conforms
Flare		± 0.2%	Conforms
Water Absorption	ISO 10545-3	≤ 0.5%	0.2%
Breaking Strength		Declared Value	≥ 1,000 N
Modulus of Rupture	ISO 10545-4	Declared Value	≥ 45 N/mm ²
Resistance To Abrasion	ISO 10545-7	Declared Value	≤ 5
Thermal Shock Resistance	ISO 10545-9	According to ISO 10545-9	Resistant
Chemical Resistance	ISO 10545-13	According to ISO 10545-13	Resistant
Fracture Resistance	ISO 10545-17	According to ISO 10545-17	Resistant
Slip resistance (wet)	BS EN 13813	Slip Resistance ≥ 0.40	SD
Non-slip classification	DN 5010	Declared Value	B ₀
	DN 5037	Declared Value	A
Resistance To Chemicals	ISO 10545-15	Declared Value	LA FA
Resistance to Stains	ISO 10545-14	Declared Value	5



Example Lighting/wiring plan



SCALE: not to scale
FEBRUARY 2023
Drawing number: 1/1

NOTES

ALL WORK MUST BE DONE BY A REGISTERED ELECTRICIAN

Study/room: Quadruple switch panel. General lighting is supplied by dimmable recessed down lighters, dimmable wall mounted lights and the 2x table lamps on the desks, wired with 5A plug points for easy turning on/off from the wall. The picture light provides an accent light. Wall mounted lights wired into the joinery framing for reading. Stairs: 2 way single switch, recessed down-lighters and LED strip beneath handrail. Telephone/data entry points, 5A single points x 2 for lamps plus standard switched GPO's at points indicated on plan.

WC: Two wall mounted lights framing a mirror.

Utility room: General lighting supplied by recessed down lighters with a task low spot light above the sink. Two way switch at both doors. Double GPO behind W/D and two additional double switched GPO's.

Kitchen/Dining: Recessed down lighters, wall mounted lights to frame the room for softer general lighting, 3 wall mounted lights above sink for task lighting, above the cabinet LED strips for accent lighting with a feature pendant above the table. All dimmable. Two way quadruple switch. Switched GPO's at standard height in positions indicated on plan plus 3 triple GPO's at working height for appliances, inc. one inside breakfast cabinet. Extractor fan above range cooker.

Living room: two dimmable recessed down-lighters, table lamps to sit in the media cabinet wired in with 5A plug points x2, 1x floor lamp plugged in via a standard double floor socket, and 1x accent picture light. Switched GPO's at positions indicated.

Pantry: two recessed down lighters, triple GPO.

Exterior: 2 x wall mounted fixture, weather proof, either side of front door. 2 x recessed ground light, weather proof. Wired to switch inside front door. 2 x sensor activated weather proof wall mounted lights at back door.



KEY

LIGHTING/SWITCHES

- Double and triple switch
- Floor light
- Picture light
- Recessed down light
- Wall mounted light
- Wall mounted light in joinery

PLUGS

- 5A plug point
- Double GPO
- Triple GPO
- Standard GPO

ELECTRICAL SYMBOLS

- Double GPO with switch
- Triple GPO with switch
- Standard GPO with switch
- 5A plug point
- 15A plug point
- 20A plug point
- 25A plug point
- 30A plug point
- 40A plug point
- 50A plug point
- 60A plug point
- 70A plug point
- 80A plug point
- 90A plug point
- 100A plug point
- 110A plug point
- 120A plug point
- 130A plug point
- 140A plug point
- 150A plug point
- 160A plug point
- 170A plug point
- 180A plug point
- 190A plug point
- 200A plug point

PROJECT NAME

101 Mickle 3 Lighting Plan

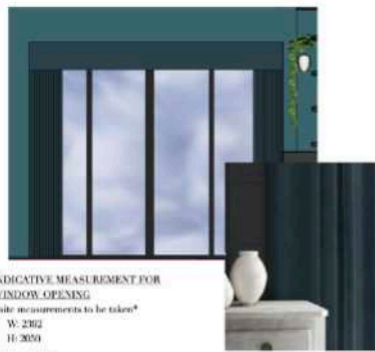
DRAWING

Ground Floor RCP

STAGE TWO: *Design development*

example Window dressings plan

SNUG



INDICATIVE MEASUREMENT FOR WINDOW OPENING

site measurements to be taken

W: 2302

IE: 2020

DESCRIPTION

- Floor length curtains to pool 5cm
- Stainless pelmet approx 17cm height, sitting within recess
- Dark behind pelmet
- Curtains to sit in recess of window
- Lined and interlined *HANNAH NOTE: THESE WINDOWS GET A LOT OF SUNLIGHT*

NOTE recess curtains/pelmet will block a small amount of the window left, right and top. Recess curtains are necessary due to the proximity to the ioners unit

FABRIC



PLEASE NOTE

I originally proposed a linen but the colour has been discontinued. This is a very similar colour but in a mix-shiny velvet mix. It also works out cheaper than the linen.
If you would like to see it in person, to order a sample, please visit:
<https://www.katiecardey.com/products/interior-panels>

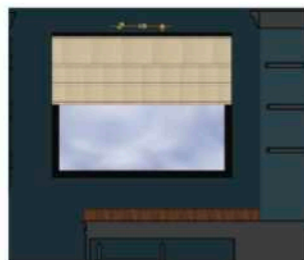
TRIM ON 4 SIDES OF PELMET



PRODUCT DETAILS

Material: 100% Linen, 100% Cotton, 100% Polyester
Colour: Dark Blue, Navy Blue, Charcoal Grey
Care: Machine washable, tumble dry low
Lead time: 4-6 weeks

STUDY



INDICATIVE MEASUREMENT FOR WINDOW OPENING

site measurements to be taken

W: 1454

IE: 1160

DESCRIPTION

- Recessed roman blind
- Blinds on chain, set on the right

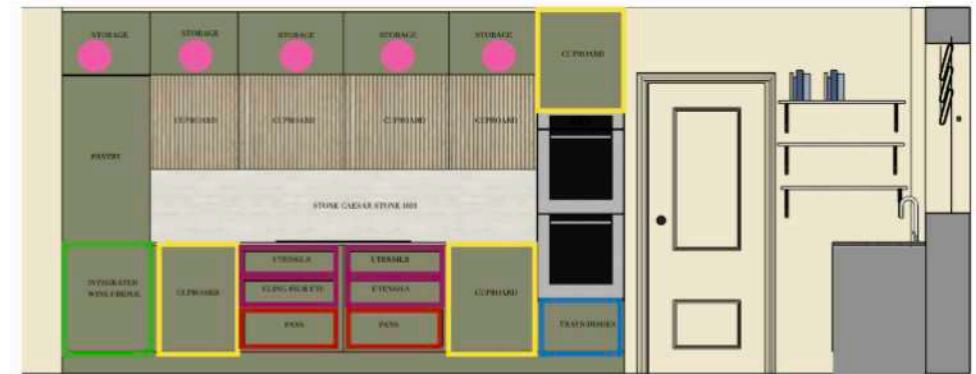
PLEASE NOTE

I originally proposed a different fabric but sent this one over message a few weeks back as I felt that the study needed to reflect some of the cream colour the media wall wallpaper.

FABRIC



example Kitchen plans (just a snapshot, full plans are far more comprehensive!)



Top row of cupboards hinged at the top with magnetic catches

Integrated fridge freezer behind door* ventilation allowance not drawn, joiner to advise

Cupboard with shelf

Drawer for trays

Pull out drawers

Pull out drawer with compartments

16

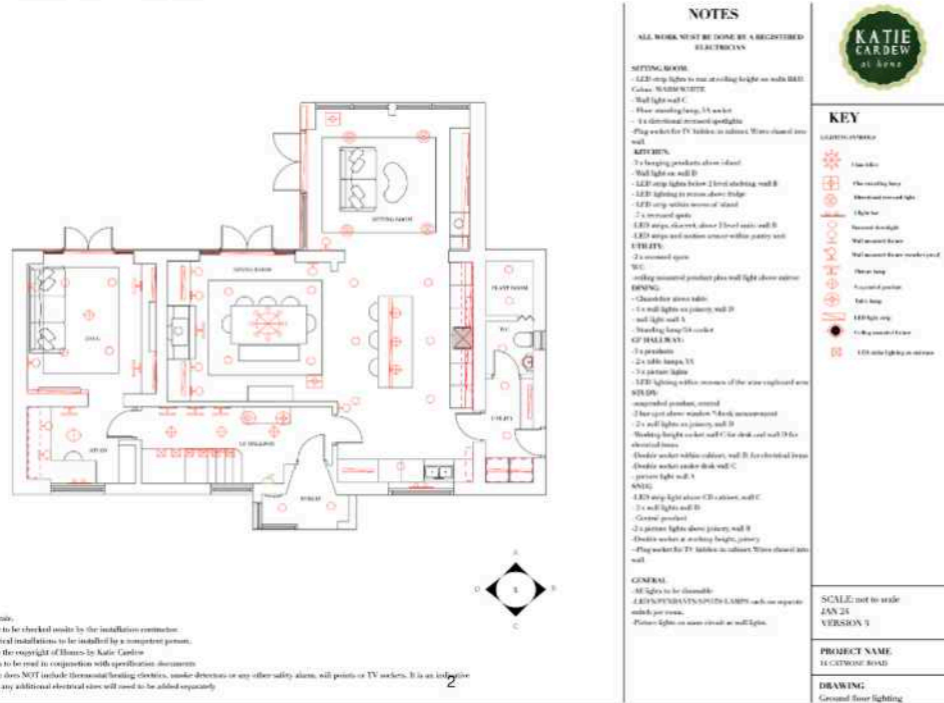


14

STAGE TWO: *Design development*

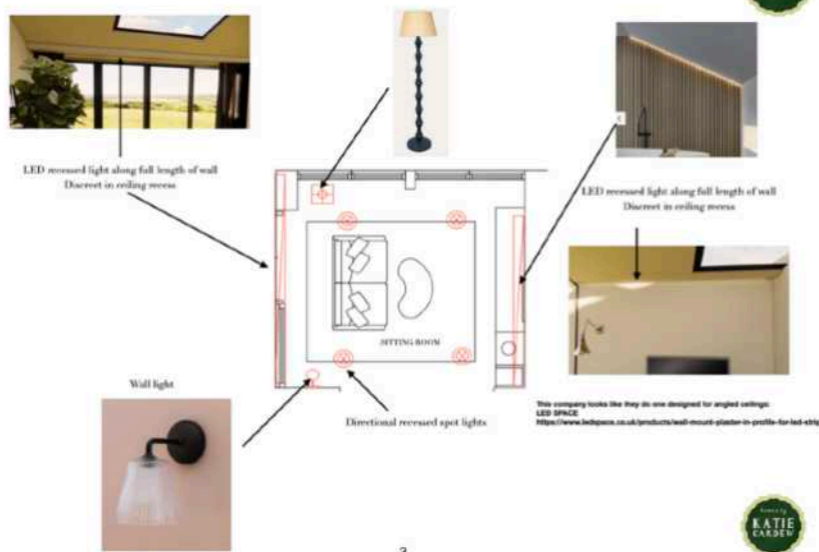
example Final lighting/wiring plan

GROUND FLOOR



Do not scale.
Plans are to be checked onsite by the installation contractor.
All electrical installations to be installed by a competent person.
Plans are the copyright of Heathwide to Katie Cardew.
Drawings to be read in conjunction with specification documents.
This plan does NOT include thermostat/boiler/electrics, smoke detectors or any other safety alarm, call points or TV sockets. It is an indicative plan and any additional electrical items will need to be added separately.

SITTING ROOM: *lighting notes*



example Art and accessories spec list

ART



- Kate Boxer Print. Really up and coming artist. Go big in this room. One great piece is better than 5 not great ones.
- Bespoke frame - E frame - colored frame



DRAWINGS ARE INDICATIVE AND ARE NOT TO BE USED TO BUILD FROM

ACCESSORIES

Make or break a room



GREENERY

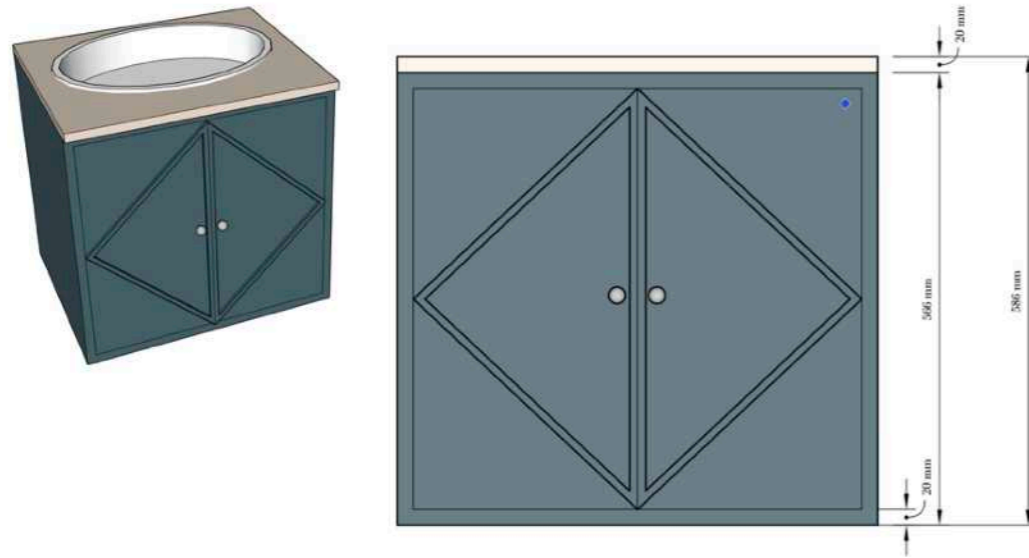
It's amazing how far a few pots and house plants go to lift a room. It's relatively inexpensive and one of the most important ways to finish a room.

- Most antique stores sell lovely old terracotta pots. Go for old over new. Mix big, medium and small
- Head to the garden centre and buy a mix of trailing plants, green house plants and potted herbs
- Place on the tray on ottoman, on the shelves and on the cupboards

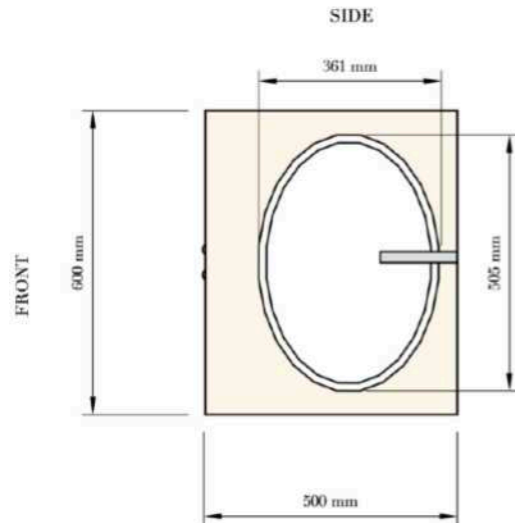


STAGE TWO: *Design development*

example
Sanitary-ware specifications



BEDROOM 1 ENSUITE
BIRDS EYE



BEDROOM 1 ENSUITE
BASIN

BASIN DIMS: 505x360
Villeroy and Boch Loop & Friends Oval Built in Basin - 61553001

Model	#18888
Collection	Loop & Friends
Product type	BB - built-in
Width	360 mm
Depth	360 mm
Height	514 mm
Description	white surface glass Sanitary porcelain Also available in ClearPlus not available
Tap fitting / Tap hole remark	without tap hole area
Overflow remark	with overflow
Material	Sanitary porcelain
Specifications text	Loop & Friends. Built in washbasin Sanitary porcelain. Size: 360 x 360 mm. Oval. White surface glass, without tap hole area, with overflow not available



EXAMPLE PRODUCT SPECIFICATION LIST
This will be a shared file with designer and client, with a breakdown per room of all items required to purchase

BEDROOM 2

ITEM	PRODUCT NAME	Details: size/color/finish/pattern	SUPPLIER	LINK	PRICE BEFORE DISCOUNT	PRICE WITH DISCOUNT (IF AVAILABLE)	IMAGE
Bedside tables x2	Shale		Swome editions	https://www.swome.com/uk/interior/bedroom/bedside-tables	£259	£259	
Wall lights x 2	bow tie wall light		Pooky	https://www.pooky.com/products/bow-tie-wall-light-black	95	86.00	
Lamps x 2 for bedside table	blanche table lamp in white marble with 25cm empire gathered lamshade in white		Pooky	https://www.pooky.com/products/blanche-table-lamp-white-marble-with-25cm-empire-gathered-lamshade-in-white	£163	149.70	
Full length mirror	MELILLA - WASHED WOOD ARCHED FULL LENGTH MIRROR 170CM X 80CM		William wood Mirrors	https://www.williamwoodmirrors.co.uk/products/melilla-arched-full-length-mirror-170-x-80-cm	£195	£195	
Pendant	tom chandelier		Pooky	https://www.pooky.com/products/tom-chandelier	£450	005	
THROW	Easy Squish Velvet Quilt	Green	LOAF	https://www.loaf.co.uk/products/easy-squish-velvet-quilt-green	215	215	
Throw 2	Domino wool throw			https://www.loaf.co.uk/products/domino-wool-throw	69	69	
Cushions x 2	Stonewashed linen cushion	Lake green	OKA	https://www.oka.com/products/stonewashed-linen-cushion-lake-green	£80	72	

PRODUCT	COMPANY	STYLE	PRICE	WHO TO ORDER
Wall lights	Pooky	elbow wall fitting light in antique brass with 15cm empire shade in currant silk with velvet	£132 inc shade	client or Katie for 10% discount
Picture light	Pooky	cyford regular picture light	£134.00	client or Katie for 10% discount
Standing lamp	Pooky	edgus floor lamp in distressed white with 35cm tall tapered shade in indigo rosehip linen by morris & co.	£308.00	client or Katie for 10% discount
Table lamp to sit on table next to sofa	Pooky	bluebell table lamp in blown glass with ikat shade	£255.00	client or Katie for 10% discount
Rug	John Lewis	Goodch Oriental Kazak Rug, 1294 x W204 cm, Red	£1,200.00	client
Ceiling lights	Soho Home	Soho Lighting Hollis Polished Brass Rimmed Dome Pendant Light - The Schoolhouse Collection	£353.35	client
Armchairs x2 in window	PF Collections	Louley armchairs	TBC	Katie
Ottoman	So-soak UK	Mulberry Millie Cushion	£74.00	client
Cushions main sofa x3	Loaf	In mid-brun linen	£39 per	client
Cushions, 1 each armchair	Loaf	In White Linen	£39 per	client
ART				
Suzani to sit behind sofa	ETSY		£185 + approx. £25 delivery	Client
Frame for Suzani	TBC	A local framer will stretch and frame it. Wooden oak frame advised.		
TEBAY* side table		Wooden with barley twist leg	£40 + £20 delivery	Client
Mirror above the piano	Pooky	Regular Feathers Mirror	£255.00	client or Katie for 10% discount
Print left of piano	Glassette	Rosie Harbottle	£85.00	Client
Carpet	Pay Trade Flooring	Sisal Weave Colour: Wild Ginger Style, Carpet Width: 5m Victoria Carpets Sisal Weave - Colour: Wild Ginger Style,	£31.70 per	Client to order
Bookcase (next to piano)	Vittorian		£375.00	client



I look forward to working with you!

Katie Cardew

E: homes@katiecardew.com

W: www.homesbykatiecardew.com

01572897567

See more work on instagram:

[@homes_by_katiecardew](https://www.instagram.com/homes_by_katiecardew)



BIID Provisional Associate member